

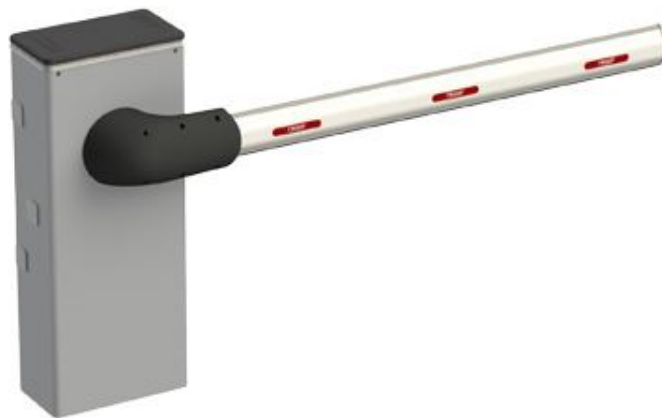
PRODUCT TECHNICAL DATASHEET

BI/008

Brushless 

Intensive use 

Digital Encoder 



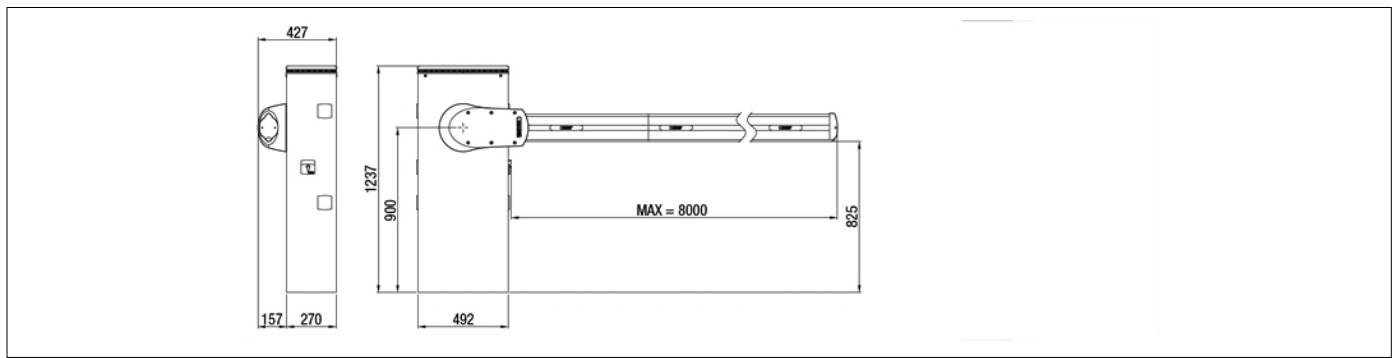
CODE	DESCRIPTION	PCS/PALLET
BI/008	Automatic Barrier BRUSHLESS 36V DC super intensive use up to 8 meters, with operator and and built in digital control panel and absolute encoder on board.	4

PRODUCT TECHNICAL SPECIFICATIONS

Barriers	Up to 8 mt long
Power line supply	230V AC - 50Hz
Motor power supply	36V DC
Electrical absorption	max 18A
Power rating	300W
Frequency of use	Super intensive use
Torque	10 - 400 N m
Operating temperature	- 20 + 55 C°
Protection level	IP54
Reductor Type	Irreversible
Opening time	9 ÷ 29 (sec)
Onboard control unit	CTRL Digital Controller 36V DC
Encoder	Digital native encoder + magnetic digital SENSORED, 4096 PPR
Accessories power supply	24V DC
Colour	Cabinet: painted RAL9006 arabesque grey - Head: black arabesque silver painted - Boom support: black arabesque silver painted - Boom: painted RAL9010 matt
Release system	European Key cylinder
Batteries recovery	Available (optional)

BUS synchronization Master/Slave	Yes
Operating cycles per day (opening/closing - 24 hours no stop)	2500 cycles
Maximum dimension product in mm (L x W x H)	500 x 270 x 1237
Product weight packed (Kg)	104,7
Number items per pallet	4

PRODUCT DIMENSIONS AND PREPARING FOR INSTALLATION



DIMENSIONS

PRODUCT ACCESSORIES

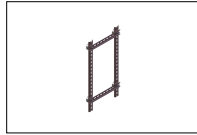
BAFS/01 Fixed support for bars.	BAFS/02 Fixing support, adjustable.	BAFS/03 Fixing support with bolt predisposition for bars.	BAFS/04 Fixing support adjustable, with bolt predisposition for bars.	BAFS/05 Adjustable fixed support with vandal-proof magnetic suction cup complete with B72/DGS demagnetizer card.	BAMS/01 Mobile support for bars.
BAMS/01/EXT Extension 20cm for mobile support BAMS/01.	BA/128/4 White painted aluminum rod, 4 meters long, with LED cover profile and impact resisting rubber profile.	JNT/BA/128 Internal boom bar joint in anodized aluminum including fixing screws for bars BA/128 (mandatory 2 pieces per installation).	BARK/02 Barrier skirting in aluminum, with stainless steel screws mounted on bronze bushings. Single module of length 2 meters.	BI/BAT/KIT Kit for emergency batteries charger for brushless digital controller CTRL 36V DC with plug-in card, with 2 recovery batteries 12V DC, 4.5 Ah. Kit for BIONIK barrier.	BI/BCHP Plug-in card, batteries charger, for brushless digital controller CTRL 36V DC, without recovery batteries, for BIONIK barrier.
BT12V45 Battery 12V 4.5 Ah (1 pc).	B71/PBX36/BOX Hybrid inverter, "Network Assisted" version, for powering the automation. Also provides a battery-charger function thanks to the connection to the solar panels or mains supply for powering the 36V DC brushless digital controllers with a mains voltage of 230V AC.	B71/PBX36/BOX/115 Hybrid inverter, "Network Assisted" version, for powering the automation. Also provides a battery-charger function thanks to the connection to the solar panels or mains supply for powering the 36V DC brushless digital controllers with a mains voltage of 115V AC.	B71/PBX/BOX Hybrid inverter, "Full Solar" version, for powering the automation. Also provides a battery-charger function thanks to the connection to the solar panels for powering the brushless digital controllers.	KT244 Fixing plate with stay bolts and screws for BI/008.	CRA/BAR Post for photocells G90/F2ES - G90/F4ES - for spaced installation on a barrier cabinet (+23cm).
CRA/BAR/M90 Post for photocells M90/F2ES0 - M90/F4ES0 for spaced installation on a barrier cabinet (+23 cm).	B73/EXP Signal status board, 2 output for CTRL - CTRL/P	B73/LTM RGB boom light and traffic light control device for CTRL.	B73/RGB RGB light control device for F70/INV36/1 modules.	B74/BCONNECT Module Wi-Fi B-CONNECT - Remote management and programming system in IP and CLOUD web browser mode via Wi-Fi hot spot P2P connection for Brushless control units (B70/2ML - EDGE1 - CTRL - CTRL/P - B70/1DCHP).	SP/85/AS/02 Assembly 2 spring diameter 85 mm for barriers.



DLD1/24
Loop detector for 1 loop, 2 output,
24V AC/DC.



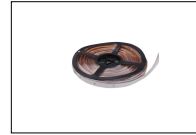
DLD2/24
Loop detector for 2 loop, 2 output +
output alarm, 24V AC/DC.



KT239
Kit DIN rail with magnetic support.



KT242
Cable passage kit with magnetic
support for barriers.



ALED/8C
8-metre LED strip with connection
cable for barrier boom (red colour).



ALED/8C/RGB
8-metre multicoloured RGB LED (red,
green + other colours) strip with
connection cable for barrier boom.



BI/BLED/8/RGB
Multicoloured RGB LED strip (red,
green + other colours) with
connection cable for BI/008 barrier
header.



R99/BASB20
Pack of 20 stickers for barrier.



R99/BASB40
Pack of 40 stickers for barrier.