

# PRODUCT TECHNICAL DATASHEET

# BG30/1004/HS

Brushless 

Intensive use 

High Speed 

Digital Encoder 

Magnetic limit switch 

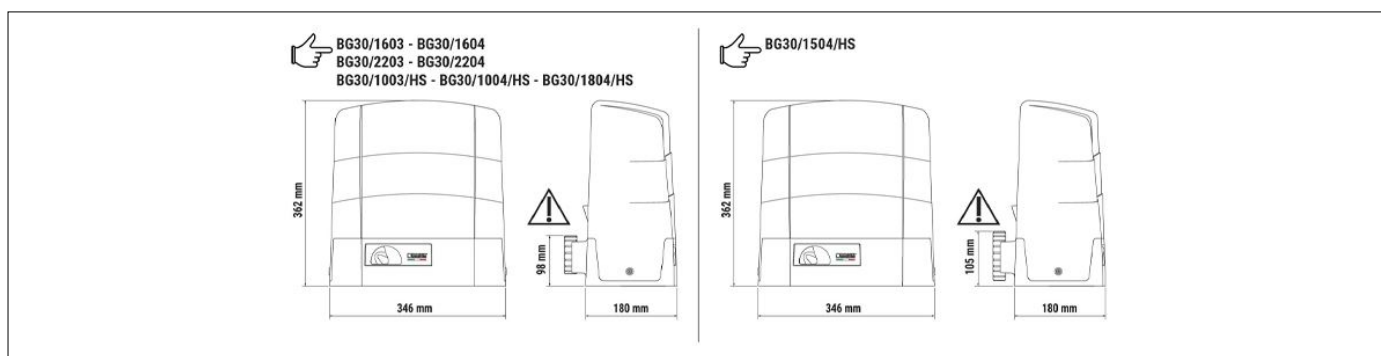


CODE	DESCRIPTION	PCS/PALLET
<b>BG30/1004/HS</b>	Electromechanical HIGH SPEED BRUSHLESS motor, low voltage, super intensive use, with native encoder onboard, irreversible ideal for sliding gates up to 1000 kg with built-in digital controller B70 series, magnetic limit switch.	30

PRODUCT TECHNICAL SPECIFICATIONS	
Max gate weight	1000 kg
Power line supply	230V AC - 50Hz
Motor power supply	36V
Power rating	590W
Frequency of use	Intensive use
Thrust	50 - 800N
Operating temperature	-20+55°C
Protection level	IP44
Reductor Type	Irreversible
Manoeuvre speed	20 m/min (0.33 m/s)
Limit switch	Magnetic
Onboard control unit	B70/1DCHP
Encoder	Digital native encoder + magnetic digital SENSORED, 4096 PPR
Batteries recovery	Optional 2 external battery 12V 4,5AH
Type exit gear	Z17/mod 4
Operating cycles per day (opening/closing - 24 hours no stop)	800

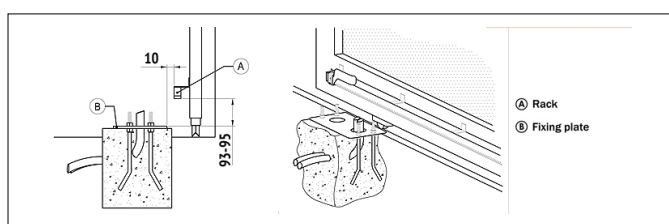
Maximum dimension product in mm (L x W x H)	346 x 180 x 362
Product weight packed (Kg)	19,7
Number items per pallet	30

# PRODUCT DIMENSIONS AND PREPARING FOR INSTALLATION

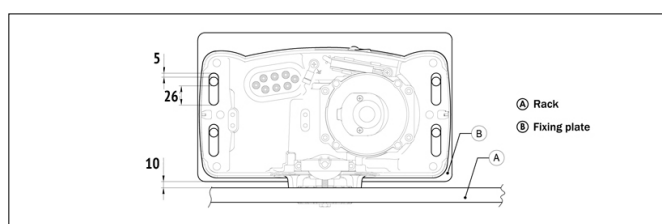


DIMENSIONS

## PRODUCT PREPARING FOR INSTALLATION



PREDISPOSITION FOR STANDARD INSTALLATION



PREDISPOSITION FOR STANDARD INSTALLATION

## PRODUCT ACCESSORIES



B71/BCHP/EXT

Kit for emergency batteries charger for Brushless digital controller EDGE1/BOX - B70/1DCHP 36V DC with plug-in card, with 2 recovery batteries 12V DC, 4.5 Ah. Box case included.



B71/BCHP/BOX

Kit for emergency batteries charger for Brushless digital controller EDGE1/BOX - B70/1DCHP 36V DC. Box case included and without recovery batteries.



B71/PBX36/BOX

Hybrid inverter, "Network Assisted" version, for powering the automation. Also provides a battery-charger function thanks to the connection to the solar panels or mains supply for powering the 36V DC brushless digital controllers with a mains voltage of 230V AC.



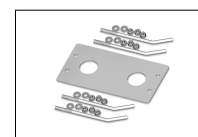
B71/PBX36/BOX/115

Hybrid inverter, "Network Assisted" version, for powering the automation. Also provides a battery-charger function thanks to the connection to the solar panels or mains supply for powering the 36V DC brushless digital controllers with a mains voltage of 115V AC.



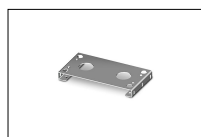
B71/PBX/BOX

Hybrid inverter, "Full Solar" version, for powering the automation. Also provides a battery-charger function thanks to the connection to the solar panels for powering the brushless digital controllers.



KT215

Fixing plate with stay bolts and screws G30 series.



KT222

Raised fixing plate for G30 series (+3,5 cm).



HT421

External box without batteries, for battery BT12V45 (4,5 Ah), BT12V70 (7 Ah) and BT12V120 (12 Ah), up to a maximum of 3 batteries.



GA550

Galvanised steel rack 22x22x1000 module 4.



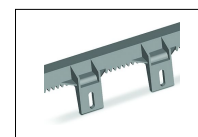
GA551

Galvanised steel rack 30x12x1000 module 4 with spacers and screws.



GA554

Pocket of 6 spacers (2,5 cm) and screws.



GA553

Nylon rack module 4 with 6 connectors L1000.



GA557

Roger Technology nylon rack module 4 with 6 connectors L1000.



GA558

Roger Technology nylon rack module 6 with 6 connectors L1000.



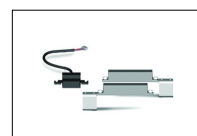
LT328

Pinion Z17 mod. 4 with increased thickness H.38 for series R30 - G30 - E30 (except BG30/1504/HS).



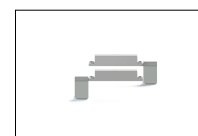
LT331

Pinion Z11 mod. 6 only for series G30 - BG30 (except BG30/1504/HS).



MC775

Kit magnetic limit switch for control unit H70/103AC, H70/104AC, B70/1DC, B70/1DCHP.



MC783

Pair of increased magnets for magnetic limit switch, only for GA558.



#### **B74/BCONNECT**

Module Wi-Fi B-CONNECT - Remote management and programming system in IP and CLOUD web browser mode via Wi-Fi hot spot P2P connection for Brushless control units (B70/2ML - EDGE1 - CTRL - CTRL/P - B70/1DCHP).



#### **R99/C/001AL**

Signboard "Automatic Opening" Aluminium version.



#### **R99/C/001**

Signboard "Automatic Opening".